



# ASSURANCE PLAN



Updated June 2025





## Message from the Principal

Welcome to the Kitscoty Elementary School family, we are excited you are here with us! Within our school family you will find a team of dedicated educators who are passionate about shaping young minds and guiding them towards success. Our teachers are committed to providing a safe and caring learning environment where each student can thrive academically, socially, and emotionally. We work hard every day to ensure that we all learn together and grow together!

# ABOUT KITSCOTY ELEMENTARY SCHOOL

## Mission:

As a caring and respectful community, we learn and grow together.

## Vision:

At Kitscoty Elementary we are committed to meeting the needs of the whole child, inspiring a love of reading, and creating optimal learning environments to support our students becoming lifelong learners.

## Mantra:

Learning together, growing together.

## School Profile:



224  
students



Serving the  
communities of Kitscoty,  
Islay & Blackfoot and  
surrounding rural areas.



13 Teachers  
&  
12 Support Staff



Grades 1-6 with a  
private ECS in the  
building.



About 80%  
of students  
ride a bus.

# PRIORITY ONE: Supporting Learning Success for All Students



## Outcome: Students are prepared for the life after K-12

### Strategies

Support and expand programming and robust learning experiences - in the classroom, online and in the community.

Facilitate the application of foundational knowledge about First Nations, Metis, and Inuit for all students.

### School Actions

- Developing a closer working relationship with a local junior elder
- Providing opportunities for staff to increase knowledge and understanding of Indigenous culture and reconciliation through professional development opportunities
- Community volunteering opportunities for students
- Offering a variety of extracurricular activities to meet students needs
- Collaborating with Kitscoty High School to provide rich experiences

### Results & Key Insights

- Offering extra curricular volleyball, basketball, badminton, run club, drama & chess club.
- Students participate in community clean up.
- Penpal opportunity between students and seniors.
- Future plans to coordinate with parents to expand extra-curricular offerings

## Outcome: Students demonstrate strong numeracy and literacy skills.

### Strategies

Support strong assessment and instructional practices to improve foundational literacy and numeracy skills.

Develop a data rich culture to support teachers in building students' literacy and numeracy skills across

### Measures

#### Provincial

- PAT Results
- High School Completion
- Citizenship
- Student Learning Engagement
- Education Quality

#### Local

- OurSchool Survey:
  - o Student Engagement
  - o Subject Scores
  - o Intellectual Engagement
  - o Quality of Instruction
- Literacy Screening
- Numeracy Testing
- Division PD activities
- School Learning Plans
- Anecdotal Evidence

	the curriculum.					
School Actions	<ul style="list-style-type: none"><li>Implementing research based practices in literacy and numeracy instruction</li><li>New literacy assessment practices aligning with literacy programming</li></ul>					
Results & Key Insights	<table><tr><th>PAT6 Acceptable</th><th>PAT6 Excellence</th></tr><tr><td>Site Avg  89.9  Prov Avg 80.1</td><td>Site Avg  34.8  Prov Avg 25.8</td></tr></table>	PAT6 Acceptable	PAT6 Excellence	Site Avg  89.9  Prov Avg 80.1	Site Avg  34.8  Prov Avg 25.8	
PAT6 Acceptable	PAT6 Excellence					
Site Avg  89.9  Prov Avg 80.1	Site Avg  34.8  Prov Avg 25.8					
Outcome: Students have opportunities for rich learning experiences from highly effective staff.						
Strategies	<p>Align professional learning with educational research focused on building instructional leadership capacity and employing sound pedagogical practices.</p> <hr/> <p>Support strong digital citizenship through a technologically rich infrastructure.</p>					
School Actions	<ul style="list-style-type: none"><li>Maintaining high levels of access to personal devices</li><li>Providing scheduled collaboration time for staff to focus on educational research and employ relevant pedagogical practices</li><li>Using professional development to support teachers to implement literacy programs that are structured but also responsive to students' changing needs.</li><li>Implement universal literacy screening to identify students at risk and create appropriate interventions. (TOSREC &amp; TOSWRF2)</li><li>Providing teaching staff with scheduled and regular collaboration time in grade groups.</li><li>Dedicated time each day given to developing number sense</li></ul>					
Results & Key Insights	<ul style="list-style-type: none"><li>UFLI &amp; Shifting the Balance training has been completed, or is being currently worked on by staff.<ul style="list-style-type: none"><li>Preliminary observations show a reduced need for tier 2 interventions</li><li>We will continue to monitor baseline data as it is</li></ul></li></ul>					

	collected to determine levels of growth	
--	---	--

**Assurance Domains:** Student Growth and Achievement, Teaching and Leading, Learning Supports, Governance.

## PRIORITY TWO: Fostering Safe and Caring Learning Environments



### Outcome: Students learn in inclusive spaces that are welcoming and caring.

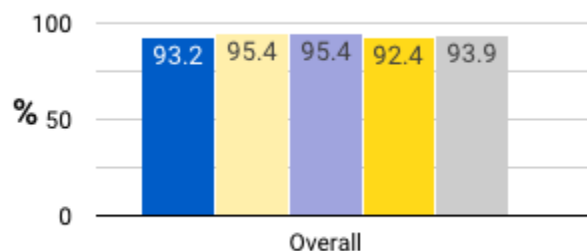
#### Strategies

Ensure all students are valued, safe, and have their diverse needs met.

#### School Action

- Supporting students with food insecurities
- Staff are visible greeting students daily
- Mentorship collaboration with KHS
- Offering a variety of extracurricular activities to meet students needs

#### Results & Key Insights



KES maintains a high level of stakeholders who feel safe, cared for and respected in the school environment.

#### Measures

##### Provincial

- Welcoming, Caring, Respectful, and Safe Environments
- Access to Support and Services

##### Local

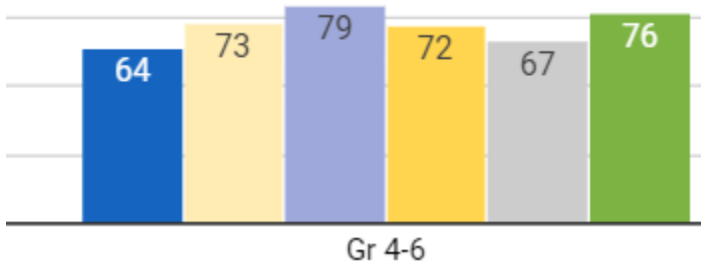
- OurSchool Survey:
  - o Social-Emotional
  - o Classroom Context
- Anecdotal Evidence

### Outcome: Students and staff health and wellness are supported.

#### Strategies

Build staff and student capacity for engaging in healthy, respectful relationships, and interactions with others.

Provide student health and wellness support through a continuum of supports model.

<b>School Actions</b>	<ul style="list-style-type: none"> <li>• Additional mental health resources are made available to all families through our Social Emotional Coach</li> <li>• Offering a variety of extracurricular activities to meet students needs</li> <li>• Surveying parents for input</li> <li>• Providing free fruit and vegetable options at hot lunch.</li> </ul>	
<b>Results &amp; Key Insights</b>	 <p>Gr 4-6</p> <p>Student Emotional Health has seen a notable improvement. KES students and parents continue to feel that we have welcoming learning environments. More work on the school sense of community and family is required: more whole school activities and establishing our grade 5 &amp; 6s as leaders.</p>	

**Assurance Domains:** Learning Supports, Local and Societal Context, Governance.

## PRIORITY THREE: Building Strong Collaborations



**Outcome:** Students benefit from strong collaborations with families, our rural communities, and external partners.

### Measures

#### Provincial

- Parental Involvement

#### Local

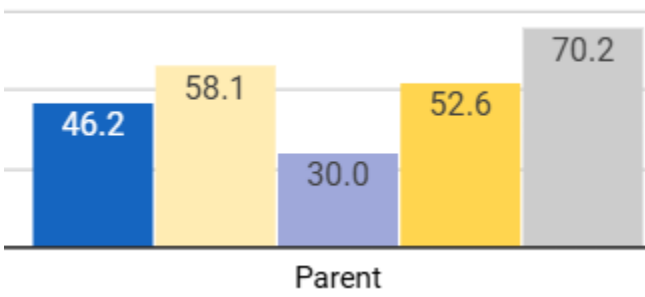
- School Council Yearly Reports

### Strategies

Support and foster learning partnerships that enhance and strengthen learning opportunities.

Continue to enhance collaboration across the division, with communities and with parents/guardians.



<b>School Action</b>	<ul style="list-style-type: none"> <li>• Strengthening relationships with parents and community through volunteerism (Hot Lunch, Read Aloud Week, Muffin Morning, etc)</li> <li>• Close collaboration with Kitscoty High School to meet the needs of students</li> <li>• Parent surveys</li> </ul>	
<b>Results &amp; Key Insights</b>	 <p data-bbox="438 682 1079 777">We saw an increase of 22.6% in our parental involvement score. We are excited to see this increase, and will continue to work to engage parents in this area.</p>	

**Assurance Domains:** Learning Supports, Local and Societal Context, Governance.